



Board of Trustees Newsletter

Welcome to 2008

We are well into the School year, nearing the end of Term 1. 2008 promises to be a tremendous year: We've got 3 great new staff members, 18 new entrants, and a host of activities & projects planned to make our school the very best we can.

For families new to Patumahoe School - Welcome to our community and our School. We pride ourselves in being the very best 'little rural school' around.

To keep you informed of major happenings at School, your Board of Trustees aim to publish a newsletter two or three times in the school year. This newsletter will let you know what the Board of Trustees does, what we have planned, and items of interest from the Ministry of Education



Welcome to New Staff

A belated welcome to new staff members - Welcome to our school & community, we hope you enjoy your time at Patumahoe as much as we all enjoying living here:

- Nikki Farrar - Nikki comes from Shelley Park School, Howick, & is teaching Years 5 & 6 in Room 11.
- Megan Truong - Welcome back & congratulations on achieving your Post-Graduate Diploma of Teaching. Megan is teaching Years 2 & 3 in Room 6.
- Todd Williams - Todd comes from overseas (UK) and is covering Maree Phillips while Maree is on maternity leave.



Inside This Issue

Welcome to 2008	1
Welcome to New Staff	1
Your Board of Trustees	1
The Role of the Board of Trustees	1
School Uniform	2
2007 ERO Report	2
Board funded Projects - Update	3
Have Your Say	4

Your Board of Trustees

- Ian Davidson - Board Chairperson.
- Vicky Farrell - Finance.
- Graeme Fox
- Sean McGinity - Property.
- Dave Pascoe
- John Wilcox
- Ron Gordon - School Principal.
- Sara West - Staff Representative & Board Secretary.

Boards are elected for a 3-year term in an 18-month cycle, retaining half the board each cycle. Elections are next due September 12 this year.



The Role of the Board

The Board of Trustees is charged by you, the school community, and the Ministry of Education, to govern the School. Governance is different to Management -

- *Governance* is the 'hands-off' process whereby the Board ensures that the School is well managed and led without actually doing the managing or leading.
- *Management*, performed by the Principal and their Senior Team, is the 'hands-on' day-to-day running of the School, ensuring the Boards policies and plans are carried out.



The Board works across 6 keys areas:

- Finance - Setting budgets & ensuring the school spends its money wisely and for the benefit of the students.
- Policy & Planning - Ensuring a vision and a long-term plan for the school's future, and ensuring the best learning environment possible.
- Personnel - Ensuring the School has the best staff with the right skills achieving the best learning for students.
- Property - Providing a safe, secure, and positive learning environment.
- Student Welfare & Learning Outcomes - Ensuring a safe physical & emotional environment where national curriculum requirements are met and students learn to the best of their abilities.
- Community Consultation - Maintaining good links with the school community and ensuring the school is governed to the priorities of the school community.

What part can you play?

- Participate in BoT elections - vote for your preferred candidates. Perhaps stand as a candidate.
- Attend a BoT meeting - though often rather procedural and focussed, all meetings are open to attendance by the School community
- Raise topics of interest with a Board member.
- If you are a fund-raiser or love to get involved, consider joining the PTA (Parent-Teacher Association). The PTA fund-raises & organise events to provide the 'extras' in learning that the Government can't. Contact PTA Chair - Sharon McGinity - 236 3044.

If you have an issue with anything at School:

1. Talk first with your child's teacher.
2. Then talk with the Principal, Ron Gordon.
3. Then talk with a BoT Member.
4. Finally, put issues in writing to the BOT - we must formally consider your correspondence at our next meeting

School Uniform



After consultation with many parents and the PTA last year, the Board decided to make the wearing of a full school uniform compulsory.

There are many important reasons for our school to adopt a compulsory uniform: These include making Patumahoe School students easily identifiable in the community thereby enhancing personal safety both travelling to and from school; to enhance school pride; and to make our children proud citizens of our community showing school spirit, building confidence and supporting school values.

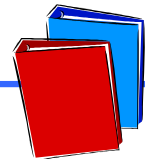
We hope you see how smart the school now looks everyday, how identifiable everyone is, and how proud everyone is of our School.

We must also congratulate parents for your quick adoption of the uniform - from the first day back, nearly every student is in full uniform - well done!

We look forward to your support of this policy which will further enhance the growing respect and popularity of Patumahoe School.

Remember, additional items of uniform can be purchased each Friday before & after School assembly, or leave an order at the School Office.

ERO Report



Many parents may remember that ERO - the Educational Review Office - came to visit the School in April 2007 and later produced a 'report card' on how the school is performing to the requirements of the Ministry of Education. ERO role is to evaluate & report publically on the education and care of students at schools & early childhood services.



Our school ERO report can be found on www.ero.govt.nz & makes interesting reading. The school is seen as well-run, well staffed, and delivering a good quality of teaching across the school. ERO state they are confident that the Board of Trustees can manage the school in the interests of the students and the crown. As a community, we should all be very proud of our ERO report & the standard of education provided at Patumahoe School every day.

The Board would like to take this opportunity to thank Ron and the staff of the school for their efforts in teaching each & every day, and in showing ERO what they do every day. We also thank the parents who participated in the ERO review and gave their feedback to ERO.

buildings will be needed to support this, and so forth. For example: Would a suite for technology / art / music be appropriate and useful? How influential would the use of information technology (IT - PC's, interactive whiteboards, digital presentations etc) be in the education of our children? What is the optimum number of computers per room? We are sure that you, as parents, have a number of thoughts and possibilities along these lines.

However, as outlined above, our current ability to finance these additional activities is severely restricted, so we also need to consider how to fund this. One possibility is to approach large businesses in the district and ask for a greater level of donation than what they are currently giving. This could be targeted at specific projects but may mean we have to trade something off, for example, the naming rights for a building. How do we as a school community feel about this? Another possibility would be to ask for people to consider endowments which may also need some form of public acknowledgment.

In nine years time, the school will be celebrating its 150th anniversary. How do we want to see this event marked? Is a tree planting sufficient, or do we think we can do better than this? How big are your dreams for Patumahoe School?

As always we would appreciate any feedback you can give. Written feedback is most welcome via the School office & addressed to the Board of Trustees.

School Vision



As a board, we are charged with ensuring that the school is well managed and operating within guidelines as set by various government bodies. We set, monitor and review a range of goals and activities designed to produce the best educational experience we can for our children. These activities can be grouped into three areas: - **What** we teach (the core curriculum), **how** we teach (teaching programmes, professional development) and **where** we teach (school environment, buildings). Whilst we much appreciate the donations of time & money that you give, it needs to be recognized that this is a relatively small amount, and with the minimal support we get from central government, we are only able to maintain our current level of activity.

In recent times, we have been thinking where we want to be in ten years time, what types of teaching programs and activities would we like to see at Patumahoe School, what resources &

Board funded Projects - Update



The school has undertaken, and is researching a number of projects to enhance the learning environment at our School:



1. *Heating of the Swimming Pool* - to provide a 6-month season for in-class swimming lessons, and to enable local private lessons after school, the Board invested \$40,000 in implementing a pool heating system last January. The pool is now heated constantly to 24 degC, enabling children to swim from October to April without the chills & feeling cold. Fulton Swim School has also started private lessons after school, giving you a local choice for swimming lessons.
2. *New Classroom 11* - to enable good Student:Teacher ratios & the new 1:18 ratio for new entrants, the old library (next to staffroom) was converted to Classroom 11 & equipped with new furniture. The library is temporarily relocated to the Hall until a purpose-built library is constructed.
3. *Replacement of the old Coal Boiler* - the old faithful coal-fired boiler has died, and we are quickly upgrading to a gas-fired heating system before winter. This heating system utilizes the water heating system and gives a kinder heating than electric heaters.
4. *New Library / Admin Facility* - This project is on hold pending sufficient funding. We continue to be frustrated by the Ministry of Education in our efforts to secure funding. The funding equation is a complicated mix of roll growth, space entitlement, building condition, & relative need vs. other schools. We are exploring options to get the library into a permanent & functional location.
5. *Relocation of the Caretakers shed* - Relocate the Caretakers & Boiler Shed, from the playground to behind the Pool next to the existing shed, to give a more open playground environment.

There are also a number of small maintenance upgrades being planned across the school: Upgrade of Rooms 3-6

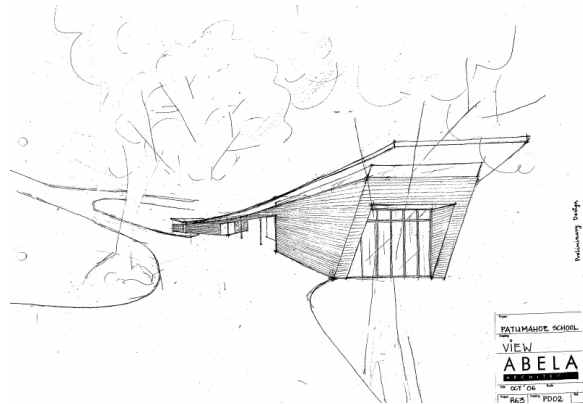
Toilets; Senior School Exterior Paint; Room 8 Windows.

Have Your Say

Want to support something being proposed in this newsletter? Want to disagree? As the Board of Trustees representing you, we value your input.

Put your words of concern/interest/idea to the Board through a written submission & send to the BoT, C/- the School Office, or email admin@patumahoe.school.nz & Attention: BoT Chairperson.

An artistic impression of the new Library/Admin complex



A written submission is best as it allows your submission to be tabled directly at the next BoT meeting.

Remember: Term 2 starts on:

Monday 5th May 2008.

Congratulations to the PTA – for an excellent Gala Day. Very well organized & great fund-raising – some \$18,000.

Thank you too to all the community who supported the PTA's fund-raising efforts.